

Disc brake

Technical data and dimensions

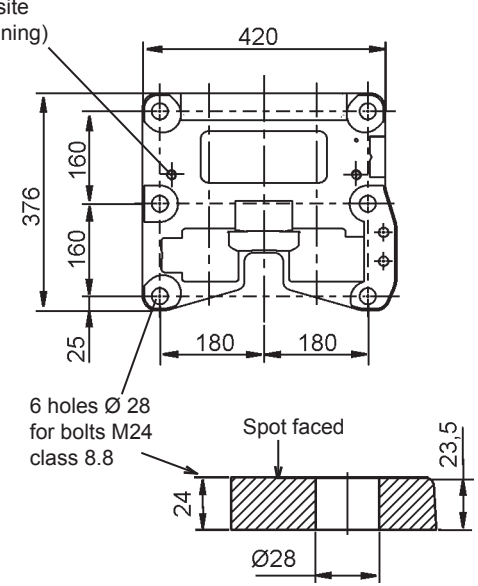
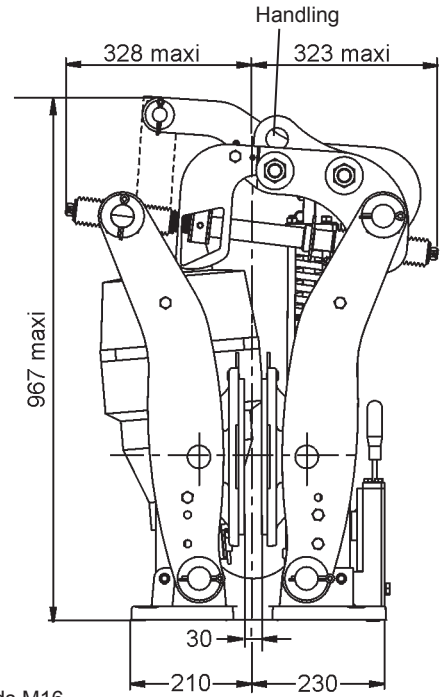
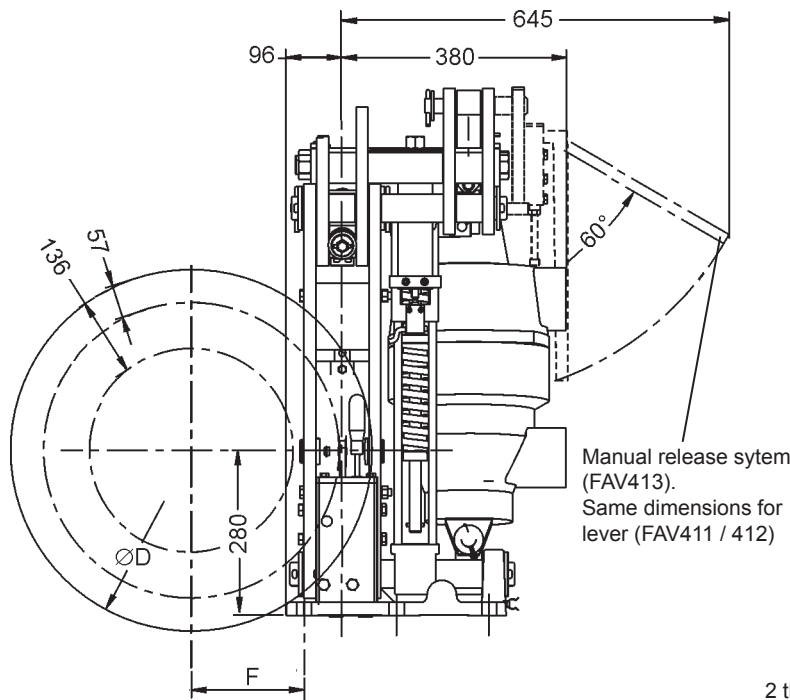
Caliper FAV 41

Fail safe
 Spring application / Thrustor release
 Auto centering
 Lining wear compensation
 Thrustor stroke control switch
 Opening proving switch
 Stainless steel pins
 Manual release lever for FAV411 and 412
 Manual release system for FAV413

Operating conditions:
 • Ambient temperature: -20°C to +50°C
 • Relative humidity ≤ 70%
 • Dust in atmosphere ≥ 65µ
 Other conditions: consult Stromag France.

Use:
 • Service brake

Options :
 • Lining full wear control switch
 • MSF : Monitoring modul for FAV
 • SIDHT : High Temperature Steel works
 • HT : High Temperature Thrustor



Weight without thrustor : 180 kg / Weight with thrustor : 220 kg
 Torque and effort values are subject to a variation of ±10%
 The disc run-out must not exceed 0,08 % of the maximum radius and the disc axial displacement must be smaller than 0,5 mm.
 Lining quality **WS1-5** in standard.

Discs (ØD)	445	495	550	625	705	795	995
Nominal torque, 1 caliper * (N.m)	- FAV413 Ed-301/10 - FAV412 Ed-201/10 - FAV411 Ed-121/10	- 4960 3050	- 5650 3500	9700 6600 4100	11200 7650 4750	12950 8800 5450	16700 - -
Maximum disc speed for nominal torque (rpm) **	2100	1900	1800	1500	1300	1200	900
F (mm) (F=D/2-130)	93	118	145	183	223	268	368
Maximum reaction on shaft (N)	- FAV413 Ed-301/10 - FAV412 Ed-201/10 - FAV411 Ed-121/10			38000 26000 16000			

* Nominal torque is adjustable from 100% to 70%
 ** For higher speeds, consult Stromag France

Due to continuous development and improvement, all dimensions and characteristics are subject to change without notice.

Installation and maintenance Leaflet No. M08294-01
 Spare parts No. S09294-01

08/11/17

T03524-01-C